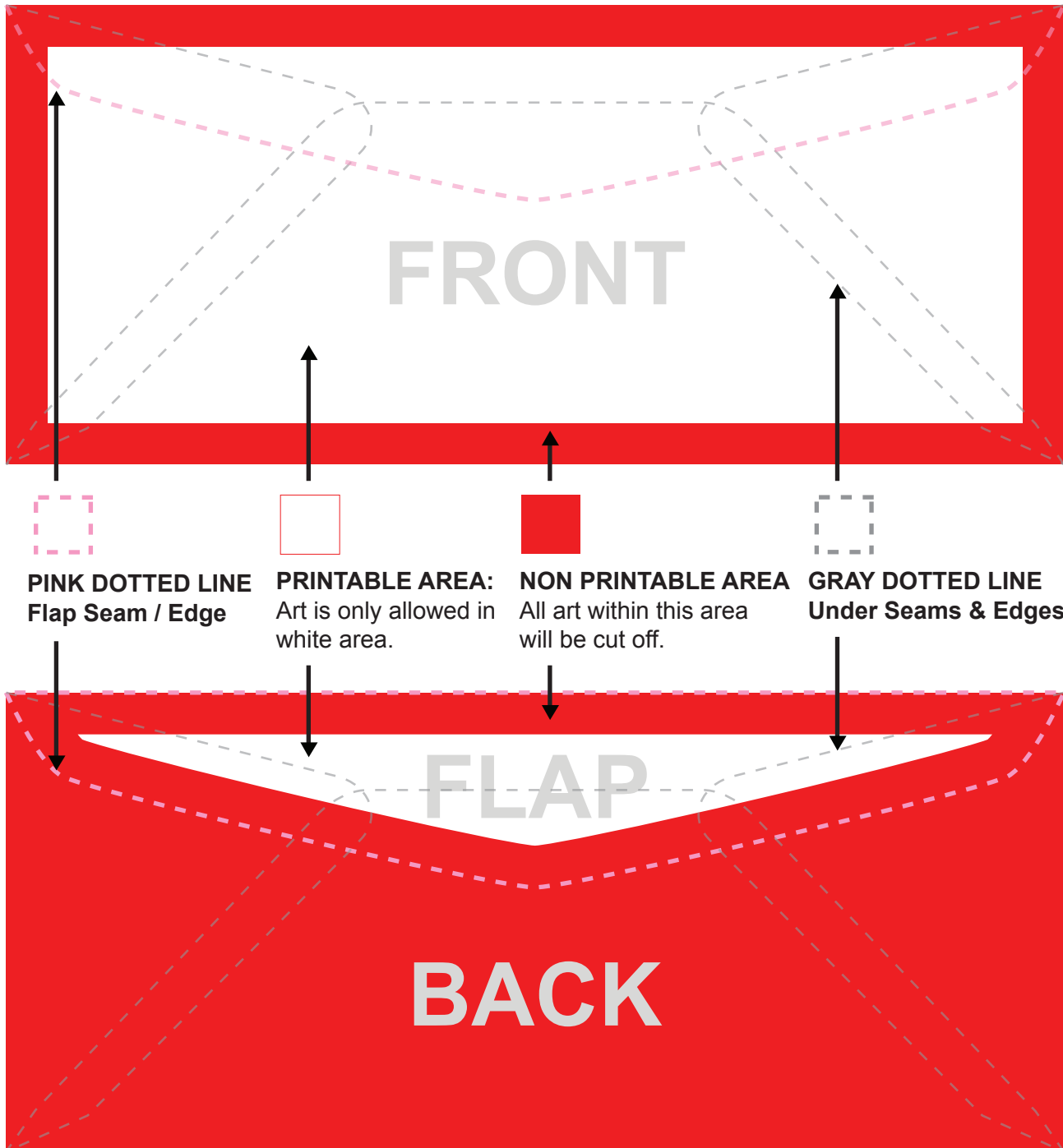


# Artwork Setup Guideline for Envelopes



## LIMITATIONS

- **NO GRAPHICS TO BLEED TO THE EDGE**  
Please ensure not to have any text or graphics go beyond white area as we need 10mm clear of any graphics all the way around the envelope (**red area**). We cannot print graphics to the very edge of the finished envelope.
- Seams on the back or inside may show through as slight discoloration when printed due to the variation of paper thicknesses when overlapping in those areas. Avoid Heavy Coverage of Ink on these locations as the discoloration is very visible.
- Jobs cannot be rejected due to this limitation and is not covered under 100% Satisfaction Guarantee Policy.